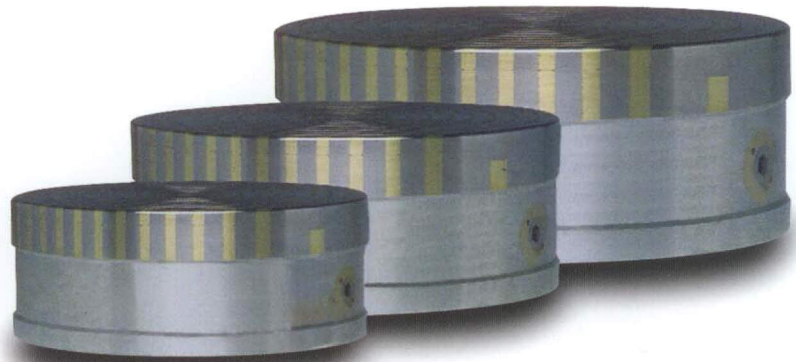


Ferromax

Circular permanent magnetic chucks for grinding and turning

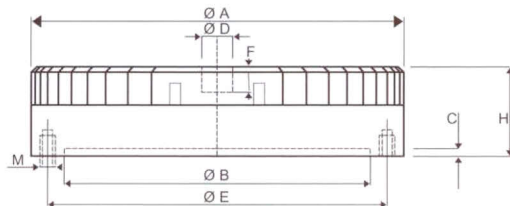


- High holding force
- Precision construction with silver brazed topplate
- Low concentrated field
- Variable holding power with smooth actuation

For additional holding of small workpieces or for accurate and quick positioning of components, locating holes F mm deep (see dimension sketch) can be drilled and tapped in the steel poles on the chuck surface to accommodate stops or other quick centering devices. All rotary chucks are constructed with detachable operating handles so they can be used safely.

| Code | A mm | H mm | B mm | C mm | D mm [max] | F mm [max] | M mm | E mm | Pole division | | Number of keys | Net Weight [kg] |
|-----------|------|------|------|------|------------|------------|---------|------|---------------|----------|----------------|-----------------|
| | | | | | | | | | Steel mm | Brass mm | | |
| 31.00.155 | 155 | 70 | 127 | 3 | 15 | 13 | 4 x M8 | 142 | 6 | 5 | 1 | 7 |
| 31.00.203 | 200 | 78 | 150 | 4,5 | 22 | 22 | 4 x M8 | 182 | 8 | 5 | 1 | 12 |
| 31.00.253 | 250 | 78 | 200 | 4,5 | 22 | 22 | 4 x M8 | 232 | 8 | 5 | 1 | 17 |
| 31.00.303 | 300 | 78 | 250 | 4,5 | 22 | 22 | 4 x M8 | 285 | 12 | 5 | 1 | 27 |
| 31.00.353 | 350 | 78 | 300 | 4,5 | 22 | 22 | 4 x M8 | 334 | 12 | 5 | 1 | 40 |
| 31.00.403 | 400 | 78 | 300 | 4,5 | 22 | 22 | 6 x M10 | 375 | 12 | 5 | 1 | 56 |
| 31.00.450 | 450 | 102 | 350 | 5 | 22 | 22 | 6 x M10 | 400 | 12 | 5 | 1 | 78 |
| 31..00500 | 500 | 102 | 400 | 5 | 22 | 22 | 6 x M10 | 450 | 12 | 5 | 1 | 85 |
| 31.00.600 | 600 | 100 | 400 | 5 | 22 | 22 | 6 x M10 | 550 | 8 | 5 | 4 | 125 |
| 31.00.800 | 800 | 110 | 600 | 5 | 22 | 22 | 6 x M10 | 780 | 8 | 5 | 4 | 253 |

All rights reserved to change construction and dimensions without notice



WALKER
WALKER
MAGNETICS

Walker Magnetics Europe B.V. Postbus 35 5530 AA Bladel The Netherlands Industrieweg 9 5531 AD Bladel
Tel. (+31) 497 383835 Fax (+31) 497 382006 E-mail wme@walkermagnet.com Internet www.walkermagnet.com

G.G.21.600.014 1500.10 Alterations Reserved 362.01.47