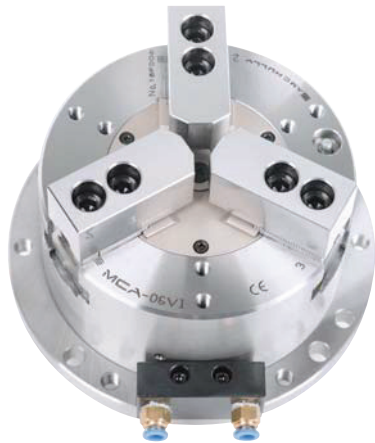


# MCA Stationary Pneumatic Chuck



## Application / Benefits

Ideal for machining centers

## Technical features

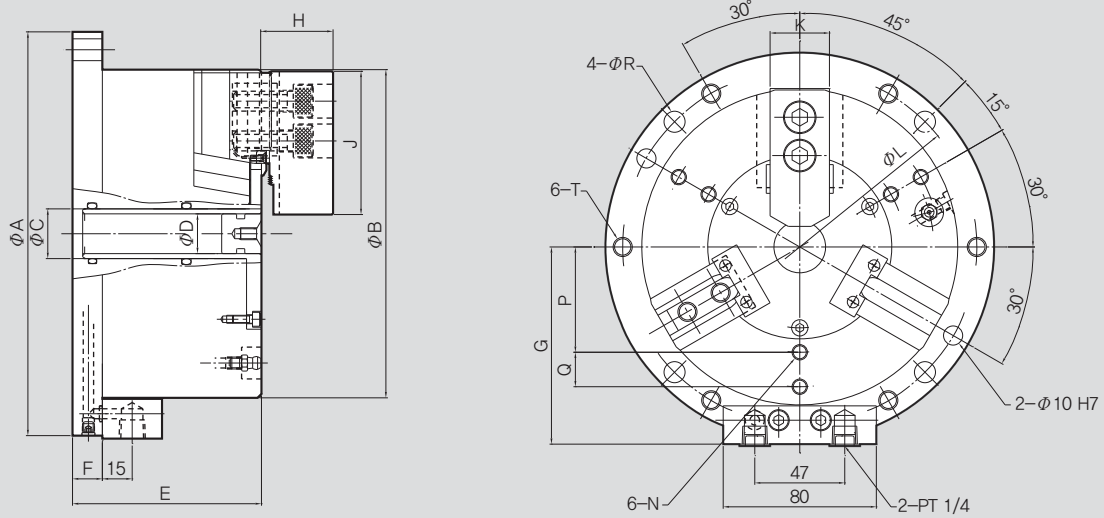
Sealed against coolant and chips

Built-in air cylinder with compact design

## SPECIFICATIONS

	MCA-04	MCA-06	MCA-08	MCA-10
Clamping Force (Pneumatic 6bar) [kN(kgf)]	7.5(765)	21(2140)	33(3300)	48(4800)
Jaw Stroke Dia. [mm]	5.2	5.2	6.3	6.3
Grip Dia. Max [mm]	110	165	210	254
Grip Dia. Min [mm]	10	23	30	50
Max. Pneumatic Pressure [MPa(kgf/cm <sup>2</sup> )]	0.7(7)	0.7(7)	0.7(7)	0.7(7)
Weight [kg]	7.3	16	28	43

Thru Hole Range :  $\varnothing 20 \sim \varnothing 43$   
Clamping Range :  $\varnothing 10 \sim \varnothing 250$



※ It is recommended to grease chucks at least twice a day in order to maximize longevity.

## DIMENSIONS

	MCA-04	MCA-06	MCA-08	MCA-10
ΦA	148	203	248	300
ΦB	110	165	210	254
ΦC	20	25	36	50
ΦD	-	20	30	43
E	90	95	106	110
F	15	15	15	16
G	75.5	103	125.5	147.5
H	27	36	42	46
J	55	72	95	110
K	23	31	35	40
N	M8	M8	M8	M10
ΦL(P.C.D)	130	185	230	280
P	-	55	68	80
Q	-	58	68	80
ΦR	9	11	11	13
T	M10	M10	M10	M12