



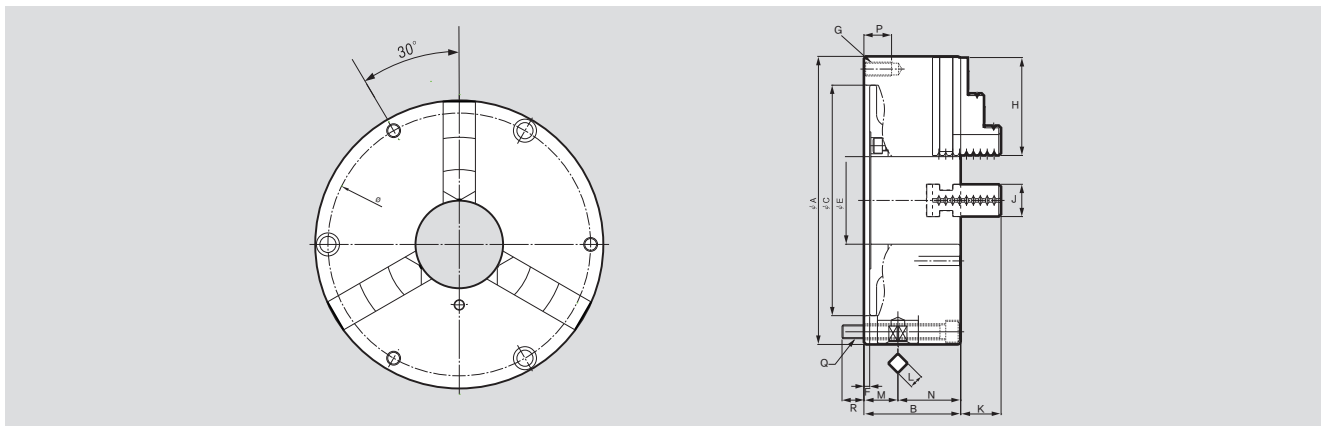
Application / Customer's Benefit

Scroll chuck with hardened jaws (Front mounting).

Technical features

Includes a set of one-piece hard jaws.

Two-piece hard jaws and soft jaws are available as additional options.



DIMENSIONS

	FTU-125	FTU-160	FTU-200	FTU-250	FTU-315
ΦA	125	160	200	250	315
B	56	65	75	85	96
ΦC	95	125	160	200	260
ΦD	108	140	176	224	286
ΦE	32	42	55	76	103
F	4	4	4	5	5
G	3-M8	3-M10	3-M10	3-M12	3-M126
H	50	65	75	85	110
J	20	20	25	28	32
K	20	29	32	34	43
L	8	10	11	12	14
M	21	24	27.5	30.5	31.5
N	35	41	47.5	54.5	64.5
P	16	20	20	24	32
Q	3-M8x60	6-M10x70	6-M10x80	6-M12x90	6-M16x100
R	13	16	16	18	21

SPECIFICATIONS

	FTU-125	FTU-160	FTU-200	FTU-250	FTU-315
Max. Static Gripping Force	15(1530)	31(3161)	37(3773)	46(4691)	55(5608)
Clamping Range	3~110	3~1655	4~190	5~220	10~300
	33~100	48~145	56~180	62~230	86~290
Handle Torque	63.7(6.5)	88.3(9.0)	147.0(15.0)	176.5(18.0)	206.0(21.0)
Max. r.p.m.	2500	4000	2900	2500	2200
Weight	4.0	10.5	17.0	25.0	42.0
Moment of inertia	0.32	1.02	4.95	7.75	21.0

※ Specifications are subject to change without notice.