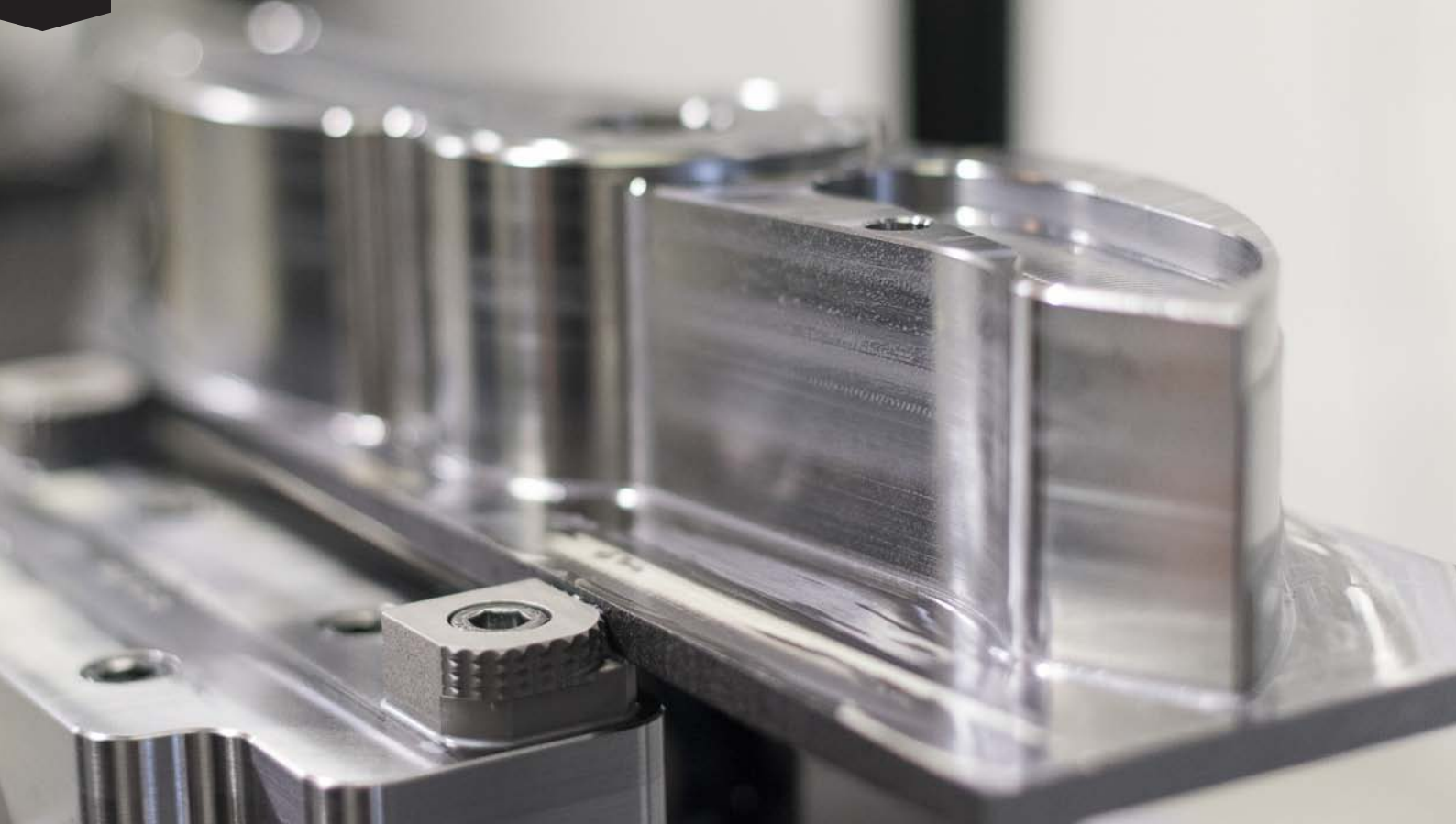


Standard AX Series

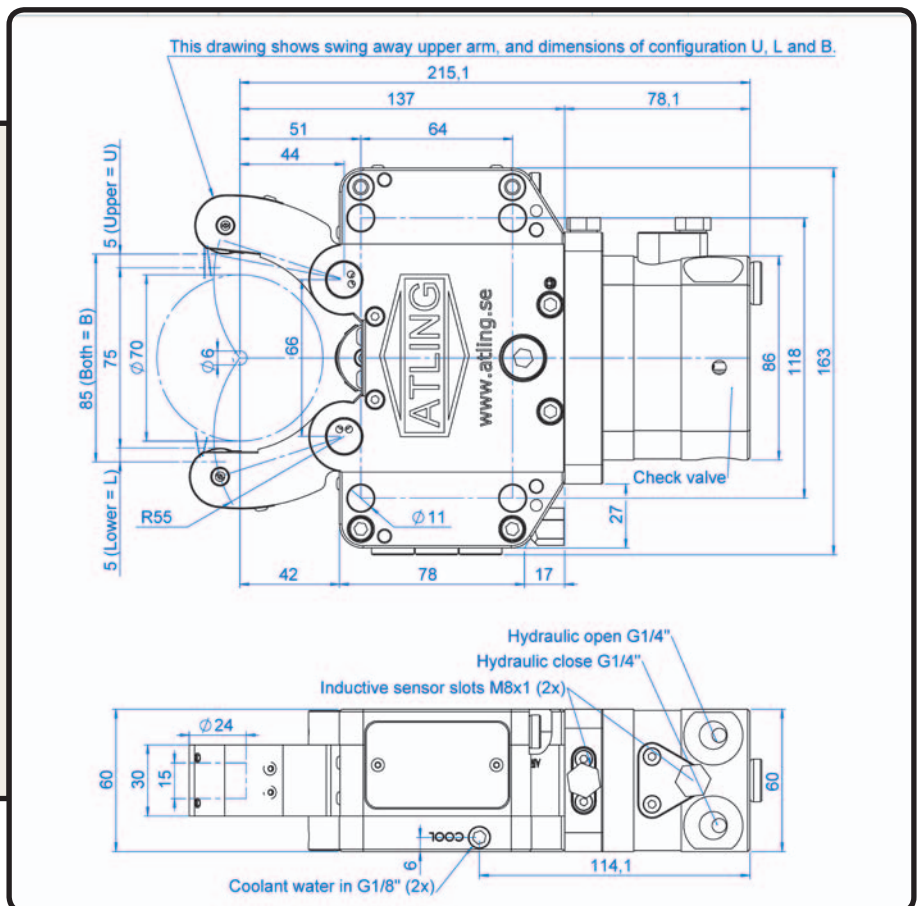


AX1E

Gripping range	6-70 mm
Total max gripping force	300 daN
Max peripheral roller speed	730 m/min
Centering accuracy*	0,02 mm
Repeatability	0,005 mm
Min operating pressure	10 bar
Max operating pressure	25 bar
Weight	8 kg
Mounting holes**	Same as SLU-1

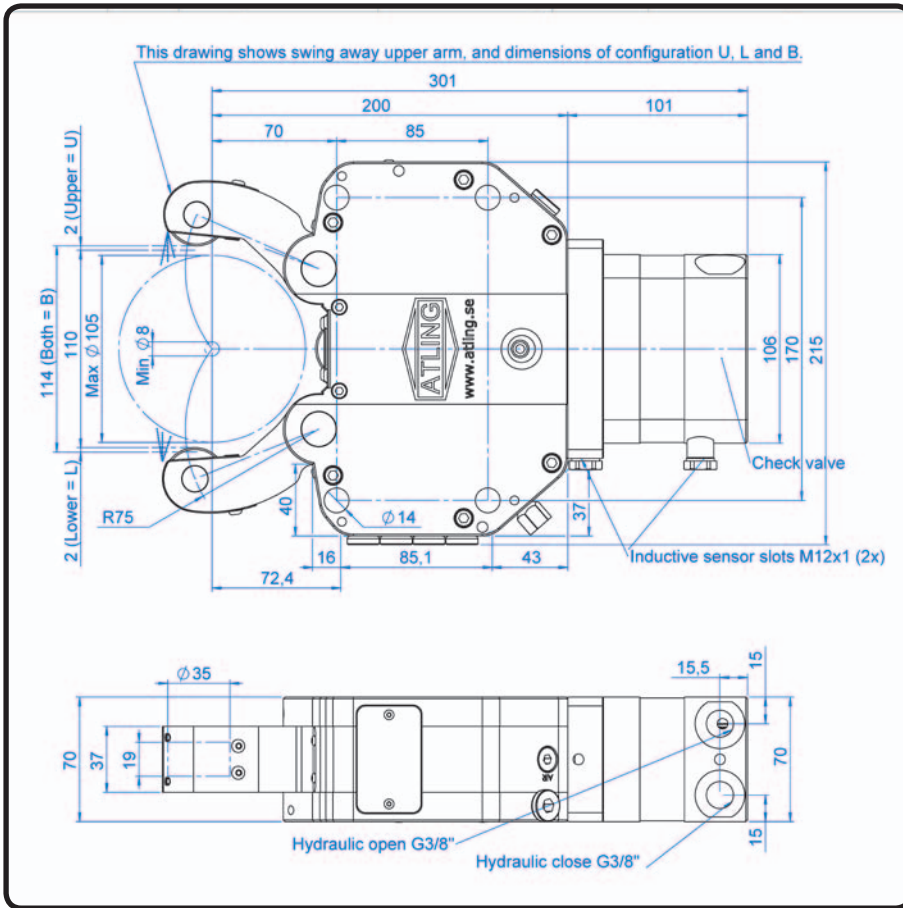
*At constant pressure and clamping force, 20 bar.

** Note: Same hole pattern, can interfere on the bracket.
Check drawings.



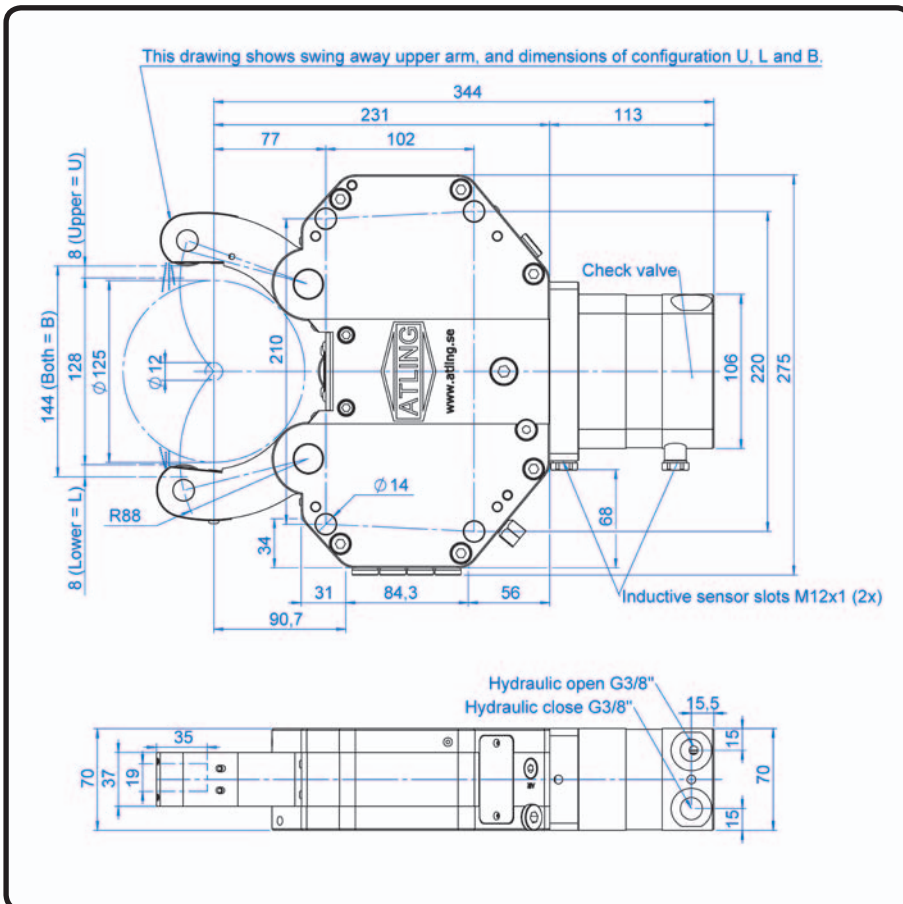
AX2E

Gripping range	8-105 mm
Total max gripping force	1200 daN
Max peripheral rollerspeed	930 m/min
Centering accuracy*	0.02 mm
Repeatability	0.005 mm
Min operating pressure	10 bar
Max operating pressure	60 bar
Weight	17 kg
Mounting holes**	Same as SLU-2



AX3E

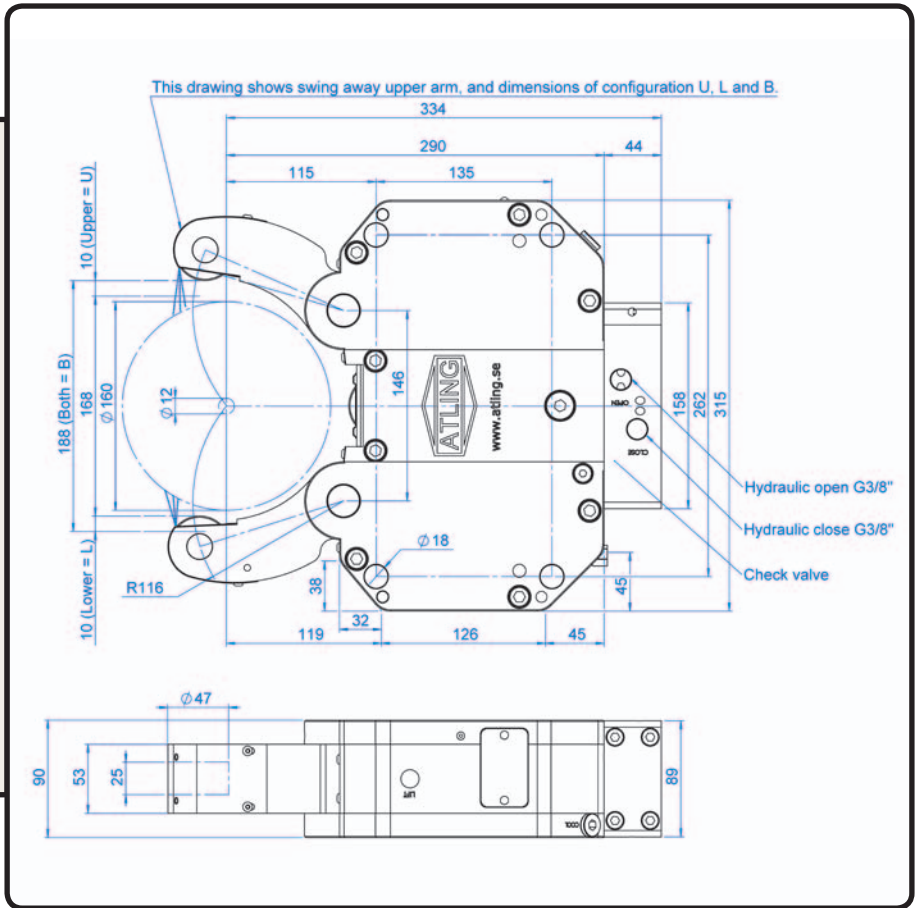
Gripping range	12-125 mm
Total max gripping force	1200 daN
Max peripheral rollerspeed	930 m/min
Centering accuracy*	0.04 mm
Repeatability	0.005 mm
Min operating pressure	10 bar
Max operating pressure	60 bar
Weight	23 kg
Mounting holes**	N/A



*At constant pressure and clamping force, 20 bar.
 ** Note: Same hole pattern, can interfere on the bracket.
 Check drawings.

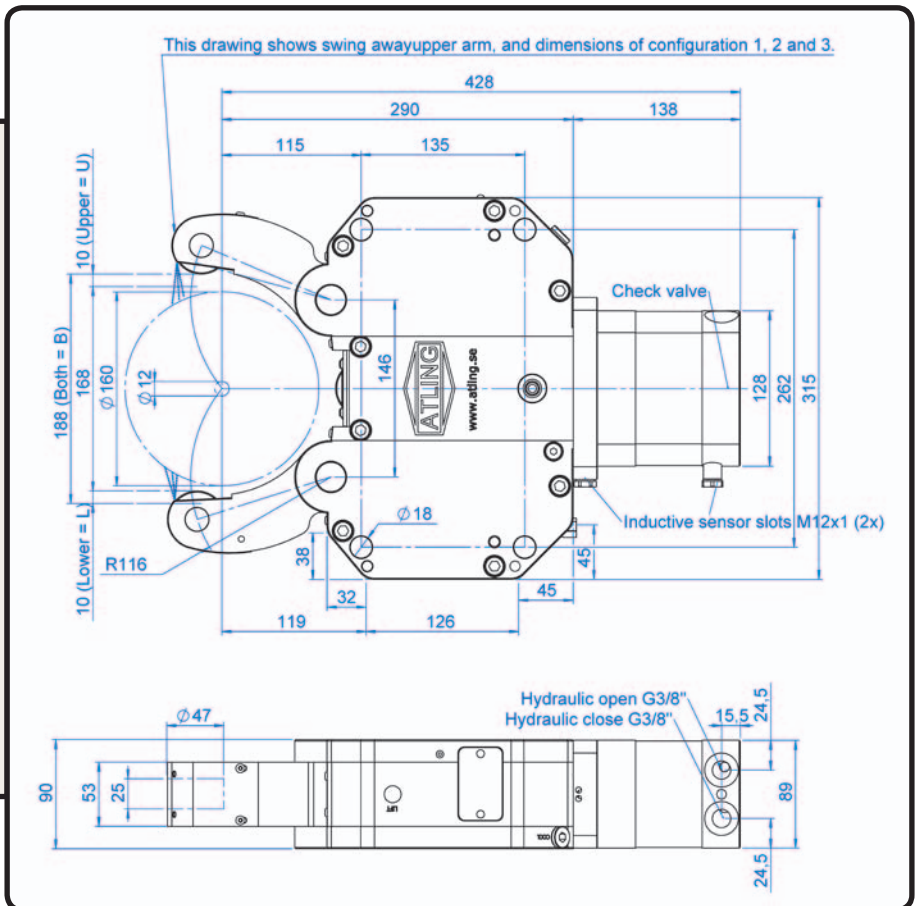
AX4I

Built-in pressure amplifier	
Gripping range	12-160 mm
Total max gripping force	3000 daN
Max peripheral rollerspeed	805 m/min
Centering accuracy*	0.04 mm
Repeatability	0.005 mm
Min operating pressure	20 bar
Max operating pressure	70 bar
Weight	45 kg
Mounting holes**	Same as SLU-3



AX4E

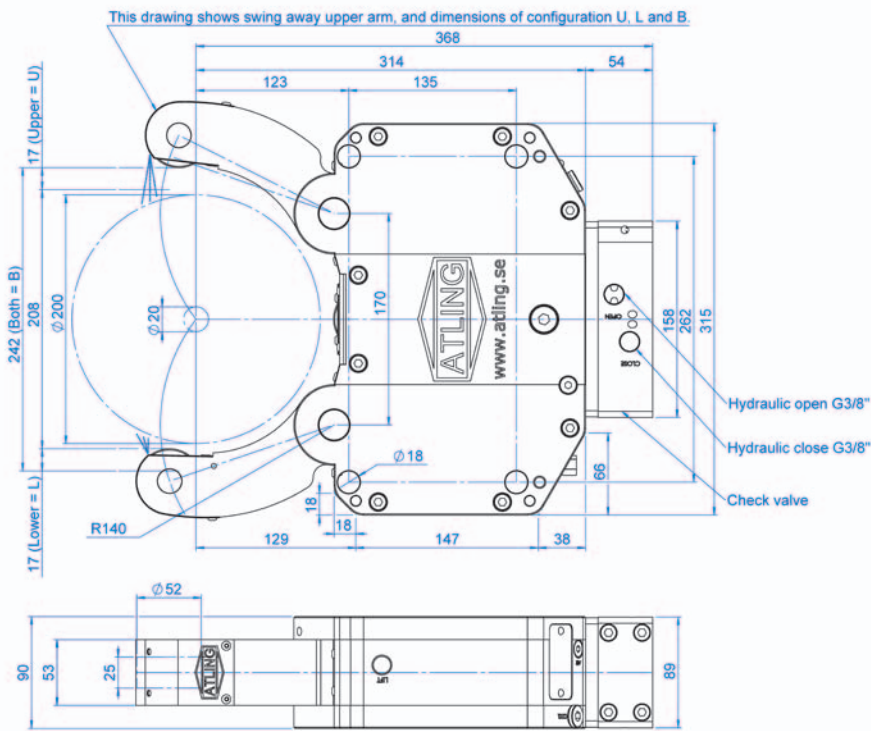
Gripping range	12-160 mm
Total max gripping force	3000 daN
Max peripheral rollerspeed	805 m/min
Centering accuracy*	0.04 mm
Repeatability	0.005 mm
Min operating pressure	10 bar
Max operating pressure	70 bar
Weight	45 kg
Mounting holes**	Same as SLU-3



*At constant pressure and clamping force, 20 bar.

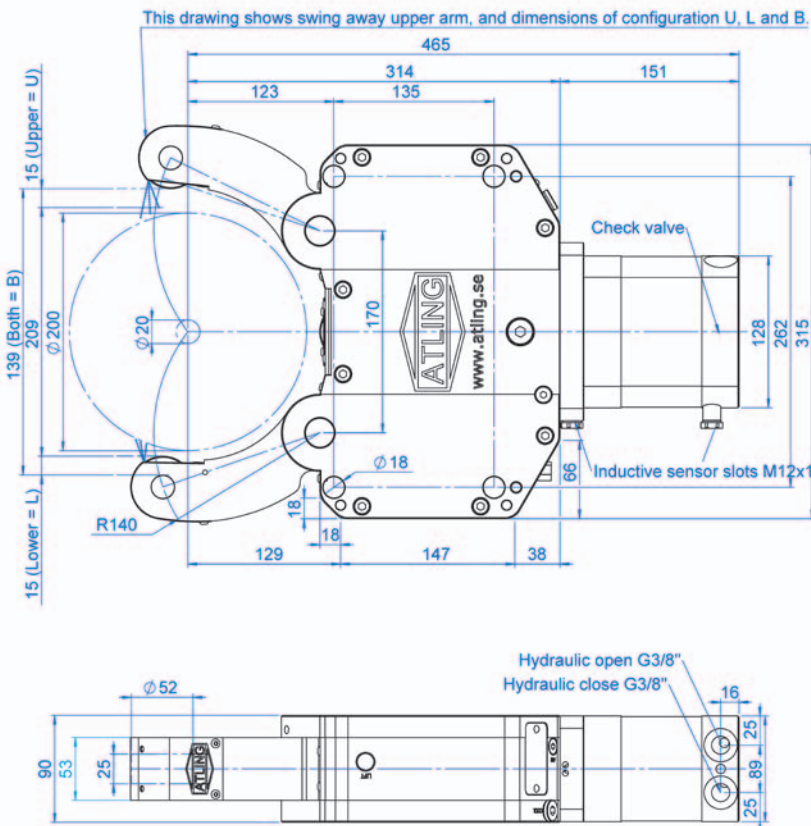
** Note: Same hole pattern, can interfere on the bracket. Check drawings.

AX5I



Built-in pressure amplifier	
Gripping range	20-200 mm
Total max gripping force	3500 daN
Max peripheral rollerspeed	890 m/min
Centering accuracy*	0.06 mm
Repeatability	0.005 mm
Min operating pressure	20 bar
Max operating pressure	70 bar
Weight	48 kg
Mounting holes**	Same as SLU-3.1

AX5E

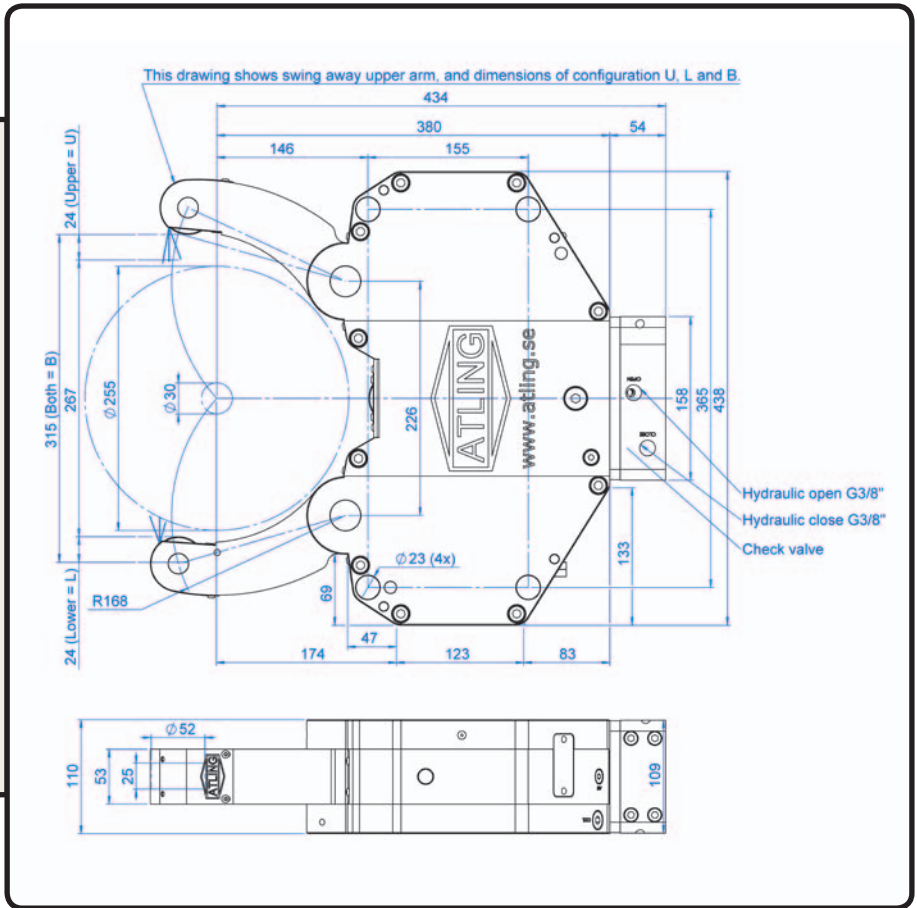


Gripping range	20-200 mm
Total max gripping force	3500 daN
Max peripheral rollerspeed	890 m/min
Centering accuracy*	0.06 mm
Repeatability	0.005 mm
Min operating pressure	10 bar
Max operating pressure	70 bar
Weight	48 kg
Mounting holes**	Same as SLU-3.1

*At constant pressure and clamping force, 20 bar.
 ** Note: Same hole pattern, can interfere on the bracket.
 Check drawings.

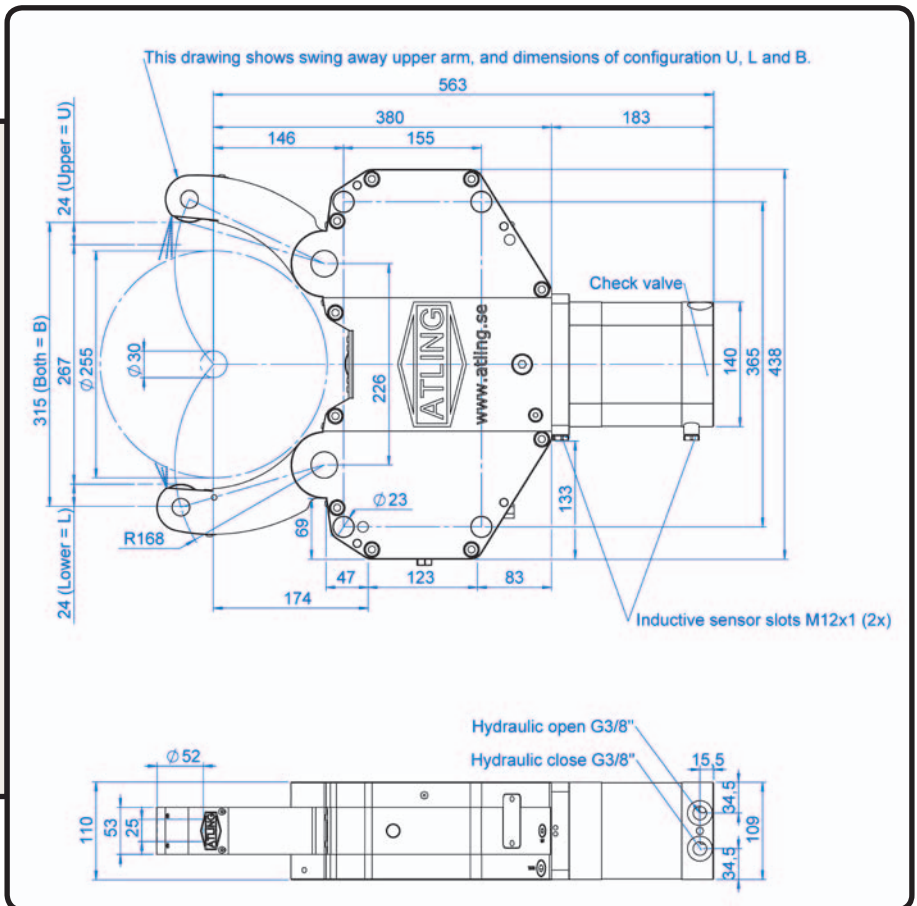
AX6I

Built-in pressure amplifier	
Gripping range	30-255 mm
Total max gripping force	4500 daN
Max peripheral roller speed	890 m/min
Centering accuracy*	0,04 mm
Repeatability	0,005 mm
Min operating pressure	20 bar
Max operating pressure	70 bar
Weight	73 kg
Mounting holes**	Front holes same, new rear holes needed



AX6E

Gripping range	30-255 mm
Total max gripping force	4500 daN
Max peripheral roller speed	890 m/min
Centering accuracy*	0,04 mm
Repeatability	0,005 mm
Min operating pressure	10 bar
Max operating pressure	70 bar
Weight	83 kg
Mounting holes**	Front holes same, new rear holes needed

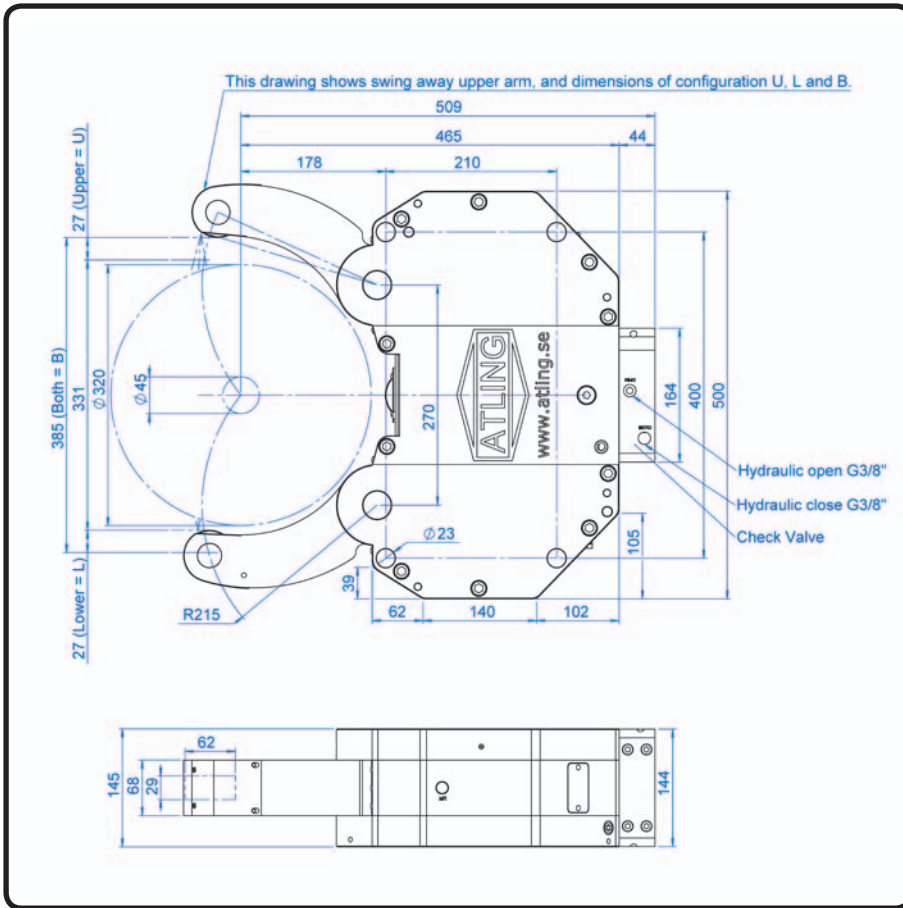


*At constant pressure and clamping force, 20 bar.

** Note: Same hole pattern, can interfere on the bracket. Check drawings.

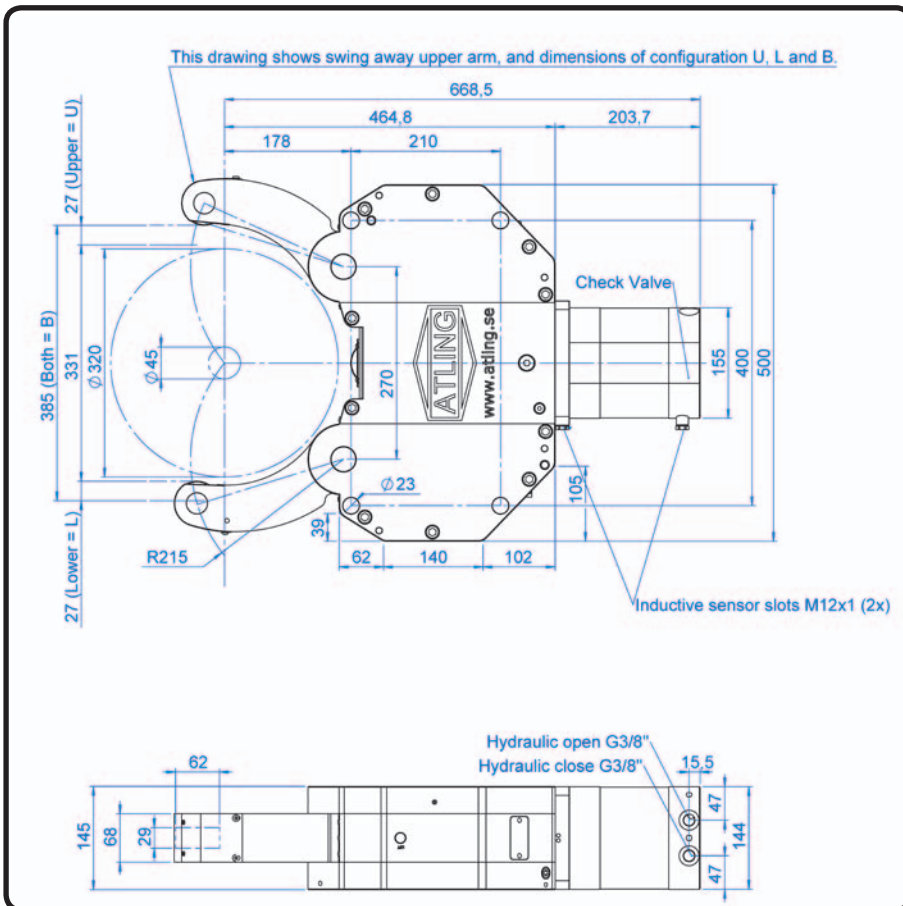
AX7I

Built-in pressure amplifier	
Gripping range	45-320 mm
Total max gripping force	5500 daN
Max peripheral roller speed	655 m/min
Centering accuracy*	0,06 mm
Repeatability	0,005 mm
Min operating pressure	20 bar
Max operating pressure	70 bar
Weight	148 kg
Mounting holes**	Front holes same, new rear holes needed



AX7E

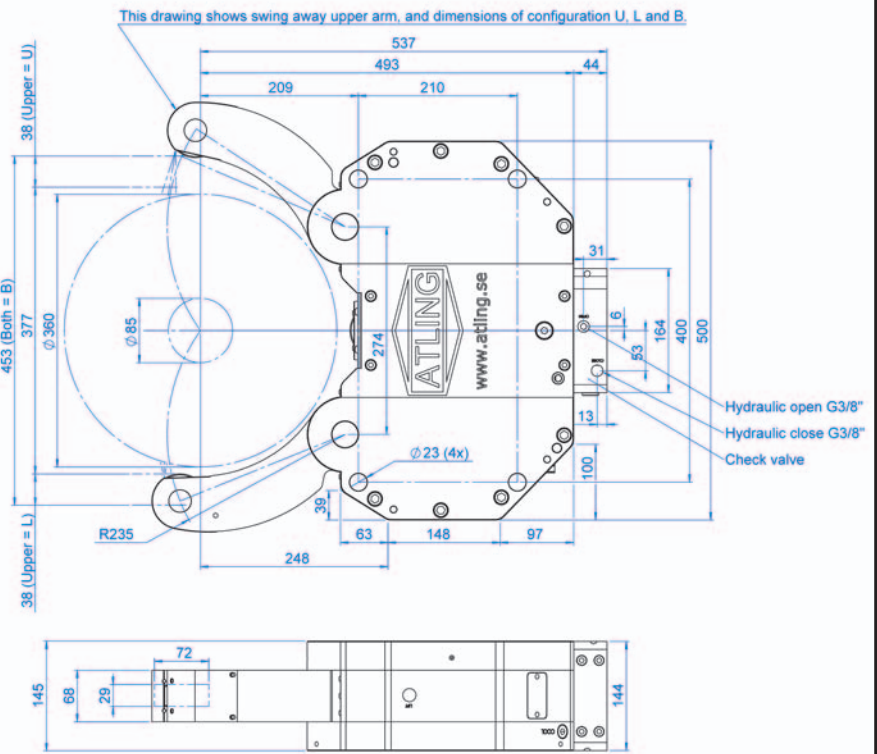
Gripping range	45-320 mm
Total max gripping force	5500 daN
Max peripheral roller speed	655 m/min
Centering accuracy*	0,06 mm
Repeatability	0,005 mm
Min operating pressure	10 bar
Max operating pressure	70 bar
Weight	158 kg
Mounting holes**	Front holes same, new rear holes needed



*At constant pressure and clamping force, 20 bar.
 ** Note: Same hole pattern, can interfere on the bracket.
 Check drawings.

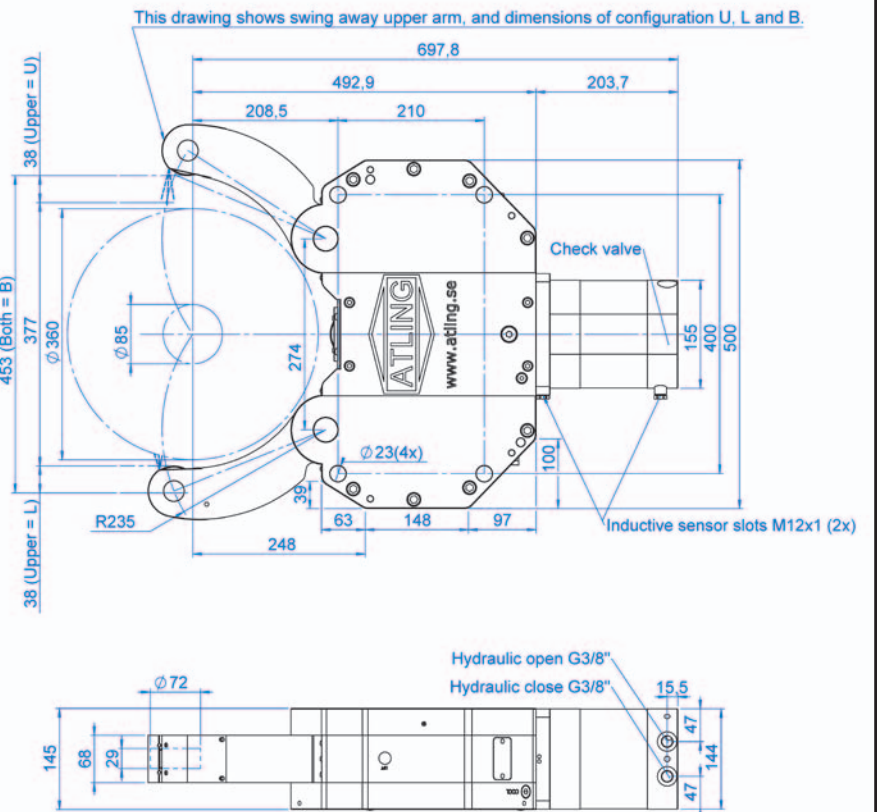
AX81

Built-in pressure amplifier	
Gripping range	85-360 mm
Total max gripping force	5500 daN
Max peripheral roller speed	765 m/min
Centering accuracy*	0,06 mm
Repeatability	0,005 mm
Min operating pressure	20 bar
Max operating pressure	70 bar
Weight	143 kg
Mounting holes**	Adapter plate needed



AX8E

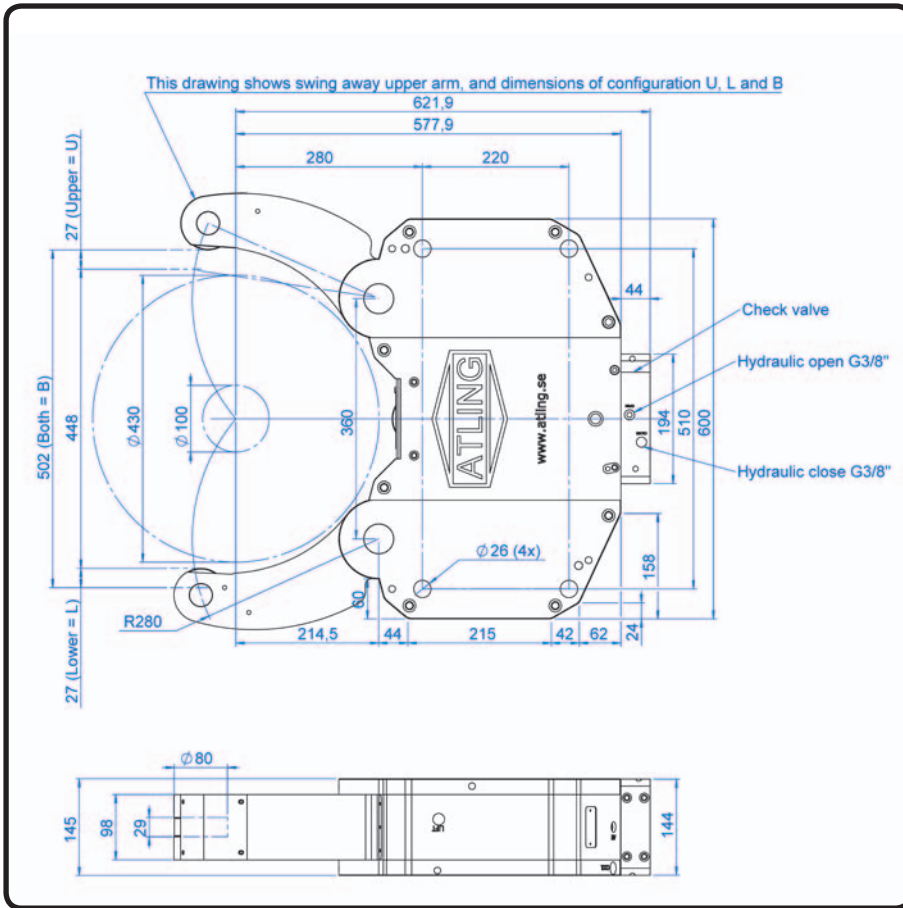
Gripping range	85-360 mm
Total max gripping force	5500 daN
Max peripheral roller speed	765 m/min
Centering accuracy*	0,06 mm
Repeatability	0,005 mm
Min operating pressure	10 bar
Max operating pressure	70 bar
Weight	156 kg
Mounting holes**	Adapter plate needed



*At constant pressure and clamping force, 20 bar.

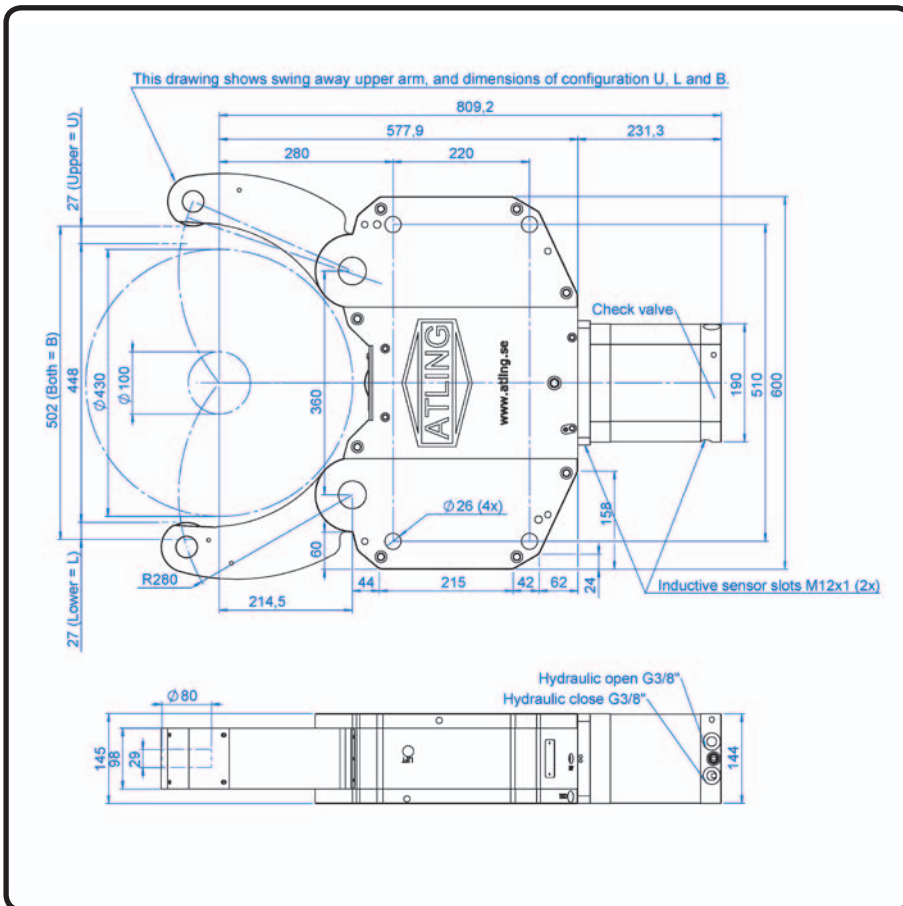
** Note: Same hole pattern, can interfere on the bracket. Check drawings.

AX8.5I



Built-in pressure amplifier	
Gripping range	100-430 mm
Total max gripping force	6700 daN
Max peripheral roller speed	685 m/min
Centering accuracy*	0,06 mm
Repeatability	0,01 mm
Min operating pressure	20 bar
Max operating pressure	60 bar
Weight	195 kg
Mounting holes**	Adapter plate needed

AX8.5E

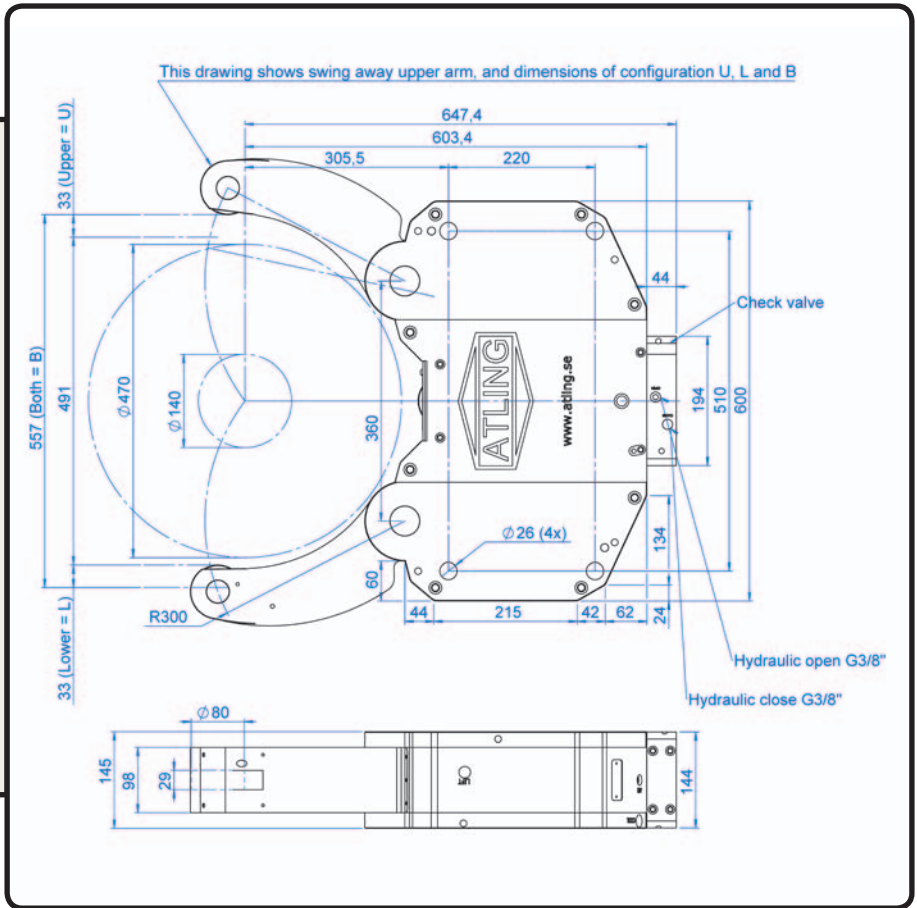


Gripping range	100-430 mm
Total max gripping force	6700 daN
Max peripheral roller speed	685 m/min
Centering accuracy*	0,06 mm
Repeatability	0,01 mm
Min operating pressure	10 bar
Max operating pressure	60 bar
Weight	234 kg
Mounting holes**	Adapter plate needed

*At constant pressure and clamping force, 20 bar.
** Note: Same hole pattern, can interfere on the bracket.
Check drawings.

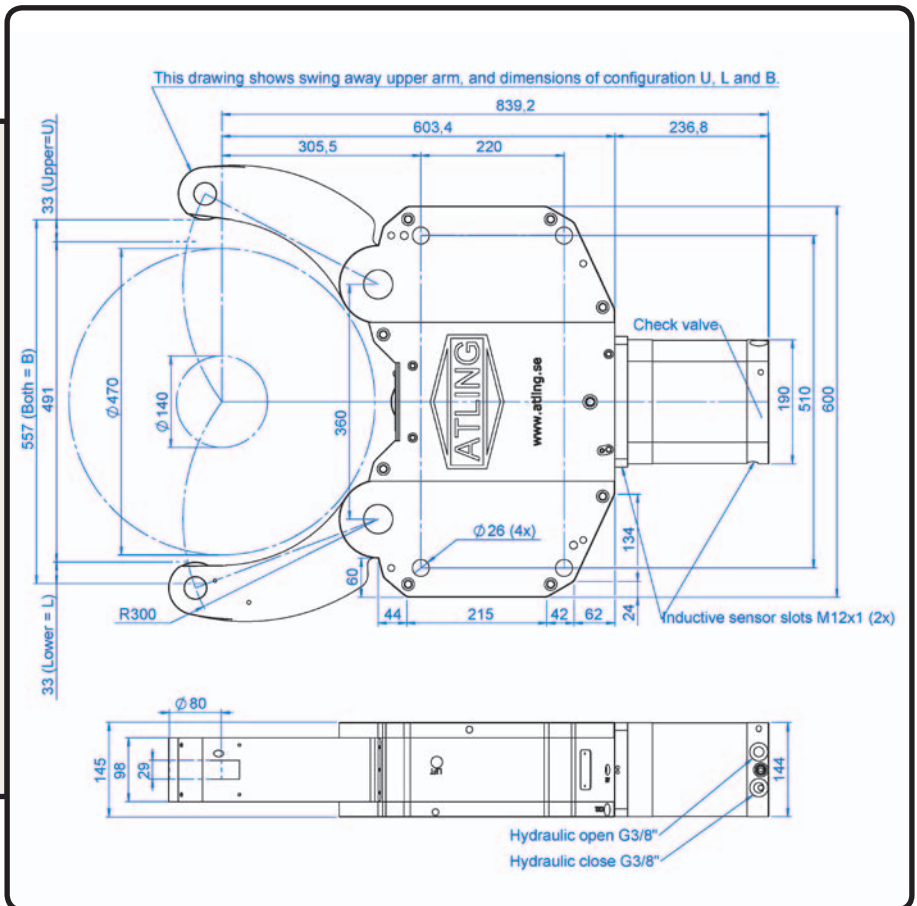
AX8.7I

Built-in pressure amplifier	
Gripping range	140-470 mm
Total max gripping force	6700 daN
Max peripheral roller speed	685 m/min
Centering accuracy*	0,06 mm
Repeatability	0,01 mm
Min operating pressure	20 bar
Max operating pressure	60 bar
Weight	234 kg
Mounting holes**	Adapter plate needed



AX8.7E

Gripping range	140-470 mm
Total max gripping force	6700 daN
Max peripheral roller speed	685 m/min
Centering accuracy*	0,06 mm
Repeatability	0,01 mm
Min operating pressure	10 bar
Max operating pressure	60 bar
Weight	234 kg
Mounting holes**	Adapter plate needed

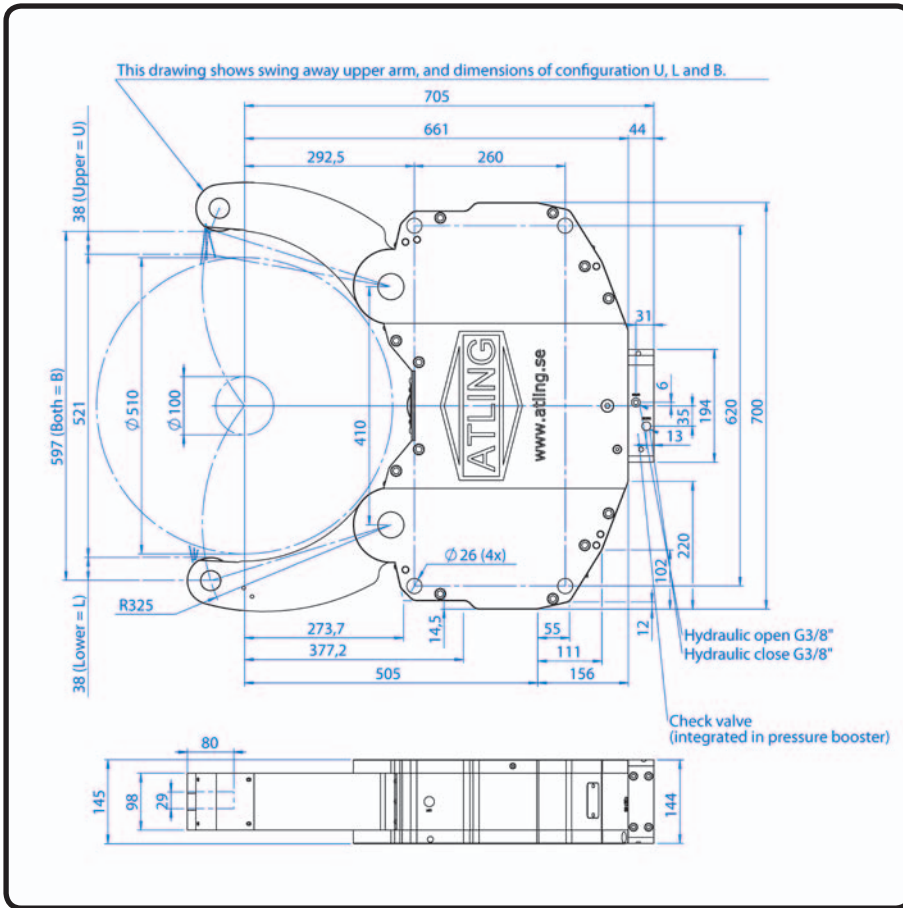


*At constant pressure and clamping force, 20 bar.

** Note: Same hole pattern, can interfere on the bracket. Check drawings.

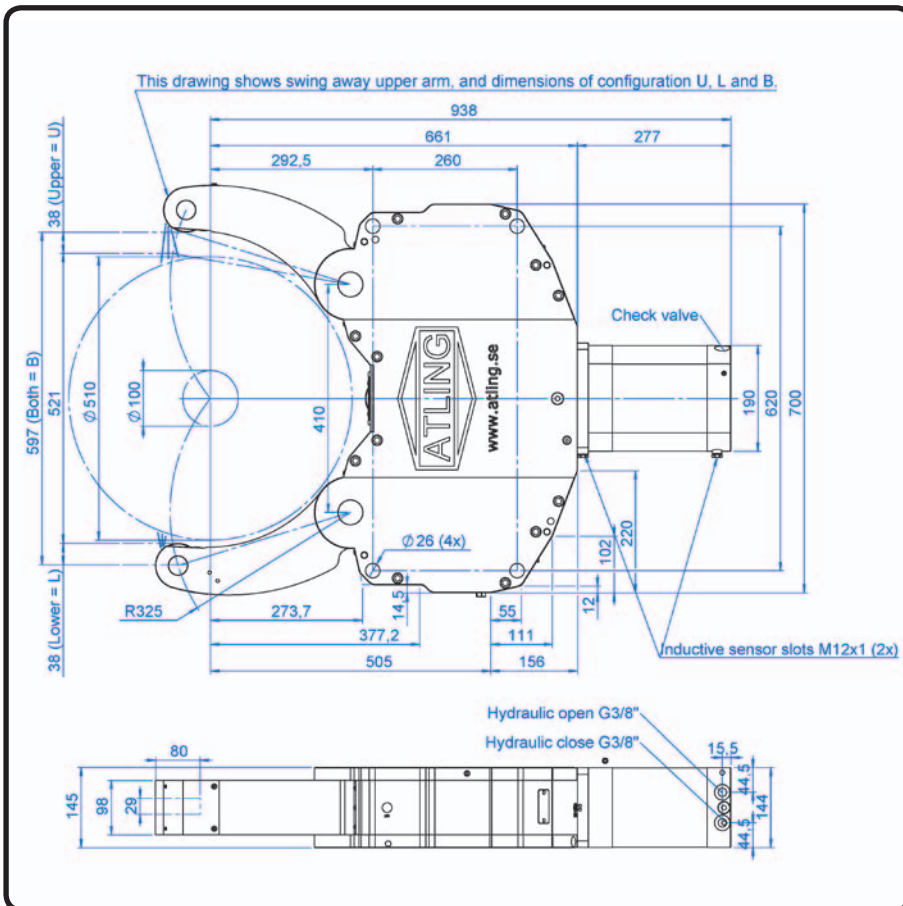
AX9I

Built-in pressure amplifier	
Gripping Range	100-510 mm
Total max gripping force	6800 daN
Max peripheral roller speed	685 m/min
Centering accuracy*	0,10 mm
Repeatability	0,02 mm
Min operating pressure	20 bar
Max operating pressure	60 bar
Weight	252 kg
Mounting holes**	Adapter plate needed



AX9E

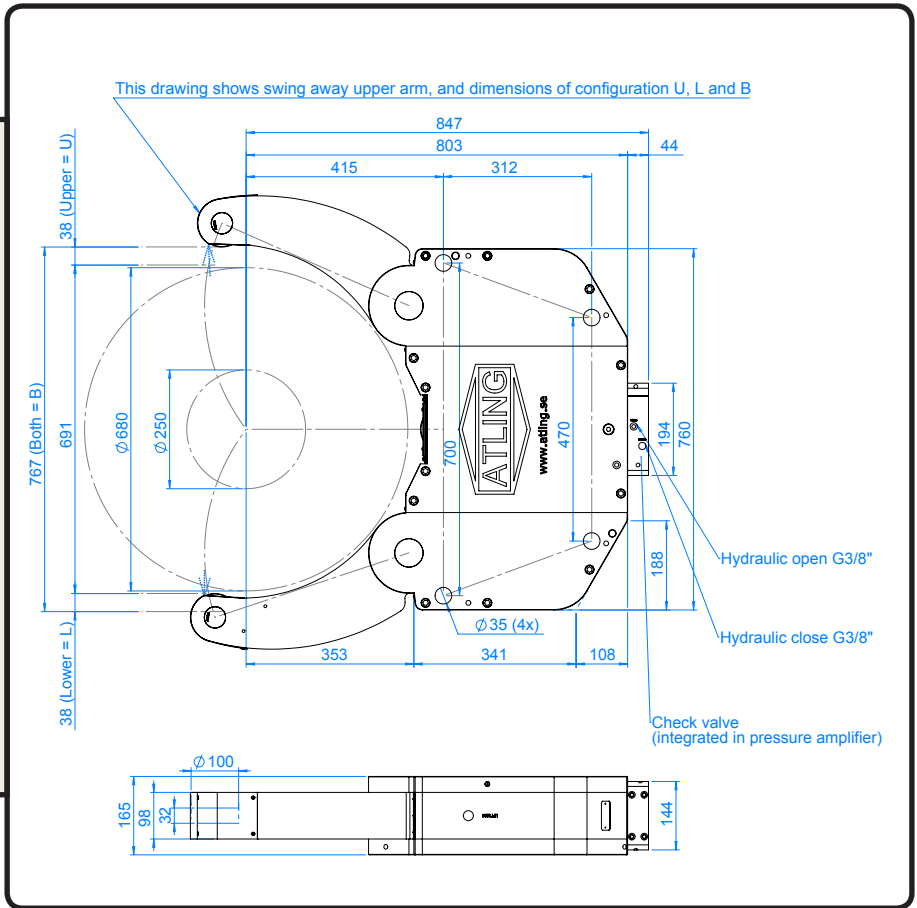
Gripping Range	100-510 mm
Total max gripping force	6800 daN
Max peripheral roller speed	685 m/min
Centering accuracy*	0,10 mm
Repeatability	0,02 mm
Min operating pressure	10 bar
Max operating pressure	60 bar
Weight	280 kg
Mounting holes**	Adapter plate needed



*At constant pressure and clamping force, 20 bar.
 ** Note: Same hole pattern, can interfere on the bracket.
 Check drawings.

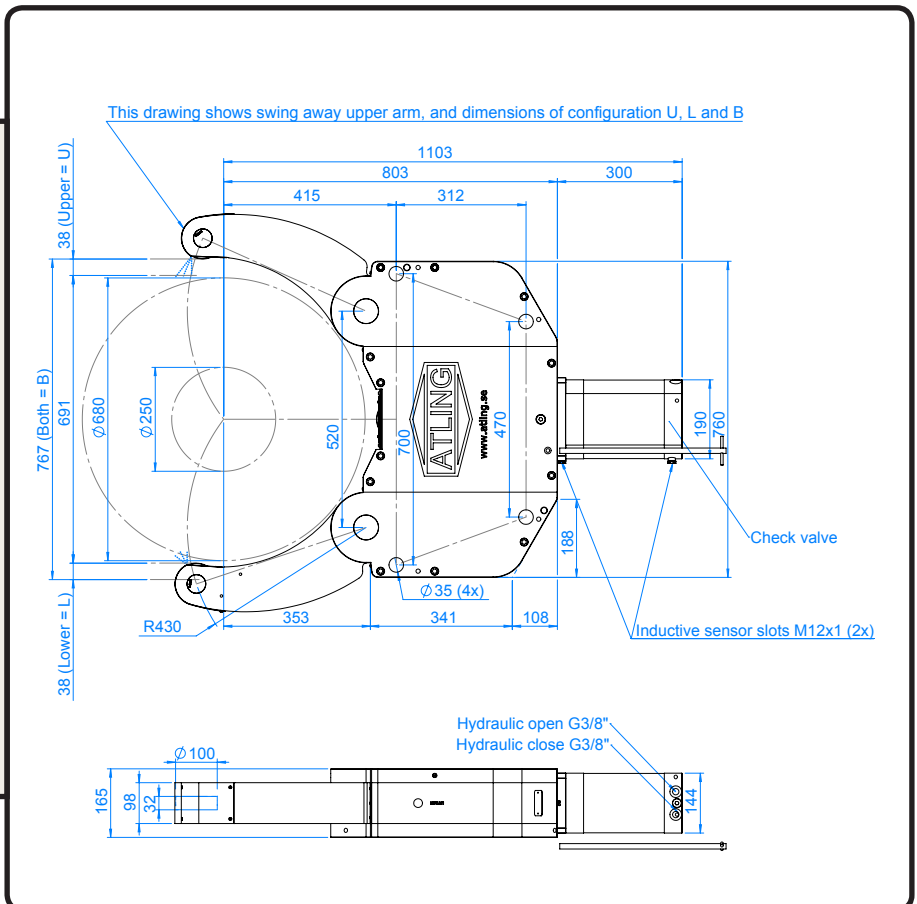
AX10I

Built-in pressure amplifier	
Gripping Range	250-680 mm
Total max gripping force	6800 daN
Max peripheral roller speed	685 m/min
Centering accuracy*	0,10 mm
Repeatability	0,02 mm
Min operating pressure	20 bar
Max operating pressure	60 bar
Weight	370 kg
Mounting holes**	N/A



AX10E

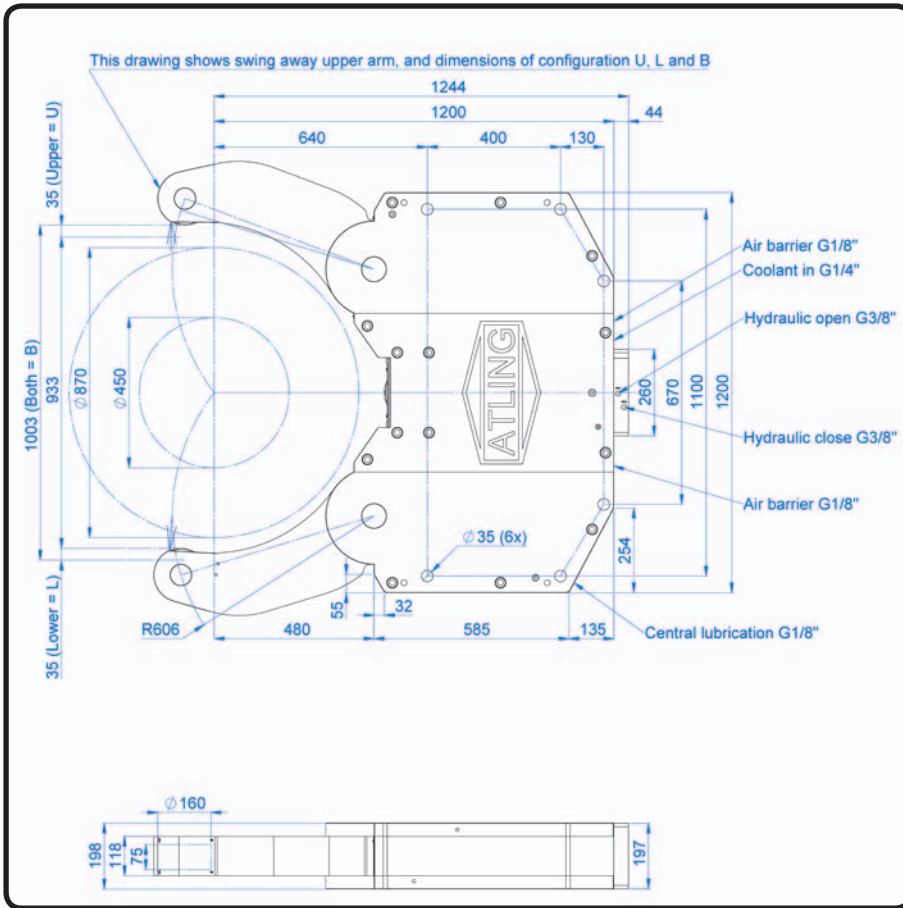
Gripping Range	250-680 mm
Total max gripping force	6800 daN
Max peripheral roller speed	685 m/min
Centering accuracy*	0,10 mm
Repeatability	0,02 mm
Min operating pressure	10 bar
Max operating pressure	60 bar
Weight	395 kg
Mounting holes**	N/A



*At constant pressure and clamping force, 20 bar.

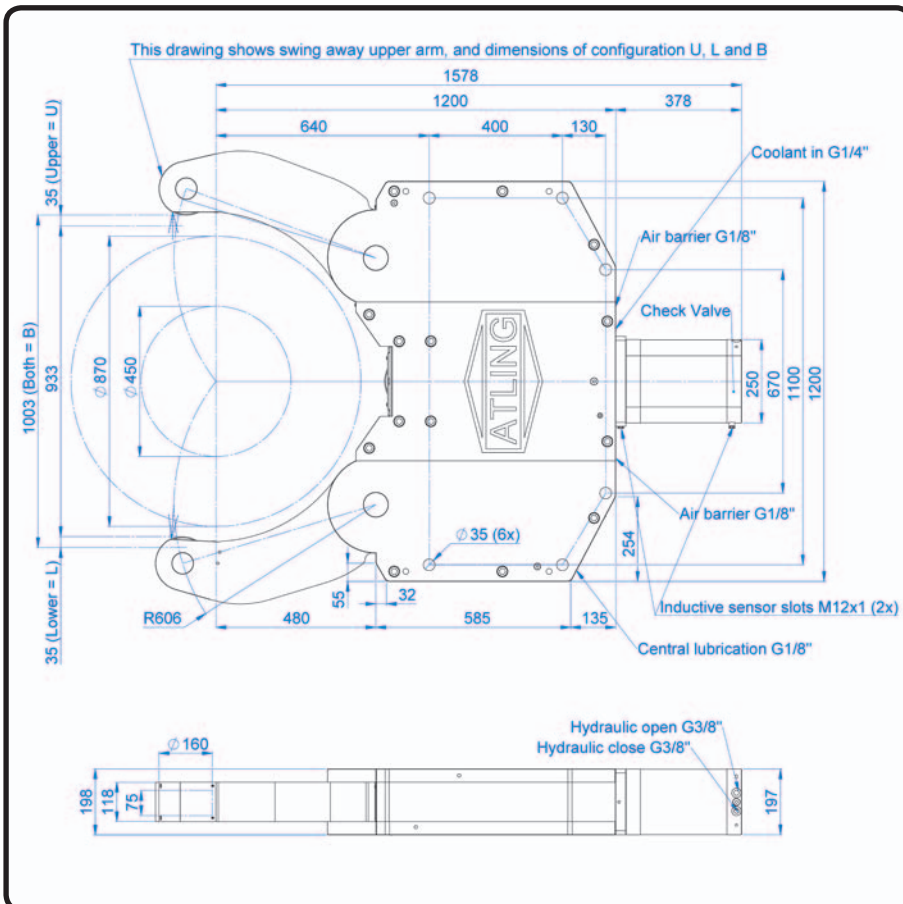
** Note: Same hole pattern, can interfere on the bracket. Check drawings.

AX11I



Built in pressure amplifier	
Gripping range	450-870 mm
Total max gripping force	9200 daN
Max peripheral rollerspeed	457 m/min
Centering accuracy*	0.20 mm
Repeatability	0.02 mm
Min operating pressure	20 bar
Max operating pressure	60 bar
Weight	1337 kg
Mounting holes**	N/A

AX11E



Gripping range	450-870 mm
Total max gripping force	9200 daN
Max peripheral rollerspeed	457 m/min
Centering accuracy*	0.20 mm
Repeatability	0.02 mm
Min pressure	10 bar
Max operating pressure	60 bar
Weight	1421 kg
Mounting holes**	N/A

*At constant pressure and clamping force, 20 bar.
 ** Note: Same hole pattern, can interfere on the bracket.
 Check drawings.